



"Alpha Antenna uses antenna designs that are known to work!"

Alpha Antenna

Model - Vertical

6-80 Meters Plus 160 Meter

1.5 KW

Vertical Base Antenna

USER GUIDE

V1.6

May 3, 2012



"Alpha Antenna uses antenna designs that are known to work!"

Introduction

Thank you for purchasing the Alpha Vertical Antenna, a complete 1.5KW deployment system for Emergency Deployment, Field Day, Apartment/Condo Residents, or HOA's.

Extremely Durable Very Heavy Duty stainless steel whip that extends to nearly 13 feet or 17 feet in height, 1/4 wavelength on 20 meters, depending upon what model you purchase. Also includes heavy-duty mount where there is a UHF connector that you simply attach the 1.5KW Alpha Match.

Frequency Coverage - Excellent performance on 6 through 80 Meters and tunable on 160 Meters.

Alpha Antenna uses antenna designs that are known to work! Designed by Amateur Radio Operators at Alpha Antenna, in conjunction with a Certified Commercial Broadcast Engineer, the Alpha Vertical Antenna uses the best antenna designs in one antenna system.

Technical Specifications

- Weight: 12 pounds
- Configuration: Vertical
- Frequency Coverage: 1.8 to 54 MHz
- Power Rating: 1,500 watts
- Height: Approximately 13 Feet or 17 Feet (depending upon model purchased)



"Alpha Antenna uses antenna designs that are known to work!"

Installation Safety

WARNING: INSTALLATION OF THIS PRODUCT NEAR POWER LINES IS DANGEROUS! FOR YOUR SAFETY, FOLLOW THE ENCLOSED INSTALLATION DIRECTIONS. THOUGH THIS ANTENNA IS CONSTRUCTED OF INSULATED WIRE, PROPER CARE MUST BE TAKEN DURING INSTALLATION. INSTALLER ASSUMES ALL LIABILITY FOR PROPERTY AND LIFE SAFETY.

YOU, YOUR ANTENNA, AND SAFETY

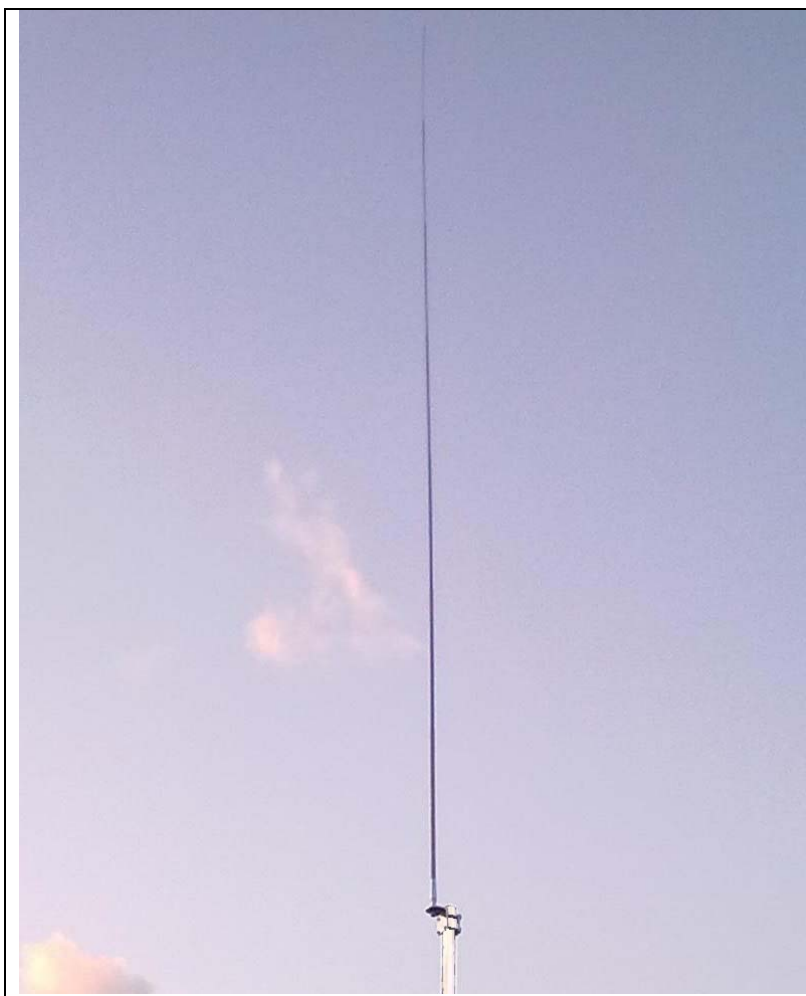
Each year, hundreds of people are killed, mutilated, or receive severe and permanent injuries when attempting to install an antenna. In many of these cases, the victim was aware of the danger of electrocution, but did not take adequate steps to avoid the hazard. For your safety, and to help you achieve a good installation, please **READ** and **FOLLOW** the safety precautions below. **THEY MAY SAVE YOUR LIFE!**

1. If you are installing an antenna for the first time, please, for your own safety as well as others, seek PROFESSIONAL ASSISTANCE.
2. Select your installation site with safety, as well as performance, in mind. (Detailed information in Site Selection appears in a separate section of this booklet.) **REMEMBER: ELECTRIC POWER LINES AND PHONE LINES LOOK ALIKE. FOR YOUR SAFETY, ASSUME THAT ANY OVERHEAD LINES CAN KILL YOU.**
3. Call your electric power company. Tell them your plans and ask them to come take a look at your proposed installation. This is a small inconvenience, considering **YOUR LIFE IS AT STAKE.**
4. Plan your installation procedure carefully and completely *before* you begin. Successful raising of a mast or tower is largely a matter of coordination. Each person should be assigned a specific task, and should know what to do and when to do it. One person should be designated as the leader/coordinator of the operation to call out instructions and watch for signs of trouble.
5. When installing your antenna, **REMEMBER: DO NOT USE A METAL LADDER. DO NOT WORK ON A WET OR WINDY DAY. DO DRESS PROPERLY:** shoes with rubber soles and heels, rubber gloves, long sleeved shirt or jacket.
6. If the assembly starts to drop, get away from it and let it fall. Remember, the antenna, mast, cable and metal guy wires are all excellent conductors of electrical current. Even the slightest touch of any of these parts to a power line completes an electrical path through the antenna and the installer – **THAT'S YOU!**
7. If ANY PART of the antenna system should come in contact with a power line, **DON'T TOUCH IT OR TRY TO REMOVE IT YOURSELF. CALL YOUR LOCAL POWER COMPANY.** They will remove it safely. If an accident should occur with the power lines, call for qualified emergency help **IMMEDIATELY.**



"Alpha Antenna uses antenna designs that are known to work!"

Antenna Installation



Step 1 – Install mount on stable metal mast or other metal mount up to 1 ¼" in diameter

Step 2 – Screw the stainless telescopic whip into the mount

Step 3 – Attach the PL-259 coaxial end from Alpha Match to the SO-239 on the mount

Step 4 – Attach a coax to the SO-239 on the Alpha Match that is a minimum of 20 feet in length. Shorter coax or coax that is coiled upon itself to form a choke balun can detune that antenna

Step 5 – Fully extend the stainless telescopic whip

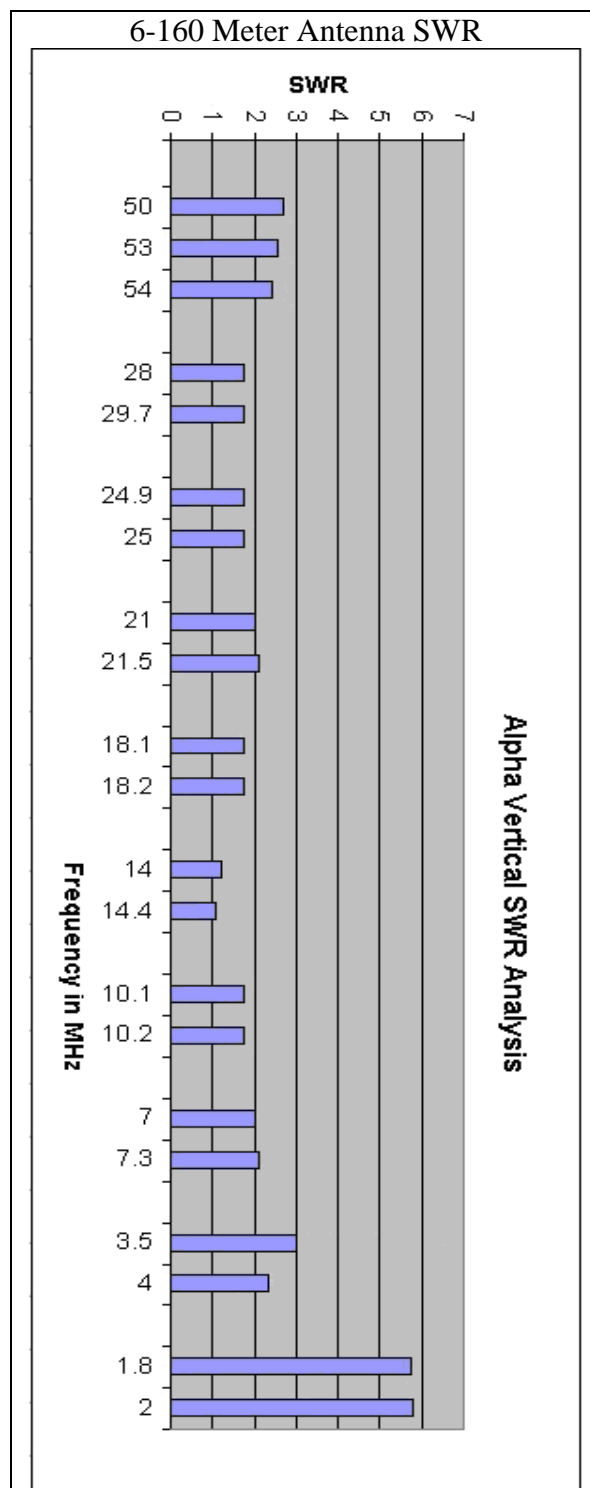
Tip – Radials/Counterpoise can help the performance of any vertical antenna system but are not required for the Alpha Antenna to function. If counterpoises are used, we recommend that four 25 foot 16, 14, or 12 gauge wires be affixed with ring connectors that can easily fit one per counterpoise under the washers on the supplied mount.



"Alpha Antenna uses antenna designs that are known to work!"

SWR Performance

SWR results may vary but will maintain less than 2.5:1 on 6-80M & 9:1 on 160M.





"Alpha Antenna uses antenna designs that are known to work!"

Have Other Questions?

If you have questions about your antenna, please feel free to contact us.

Support

Email: support@alphaantenna.com

Phone: 1-888-482-3249

WEB: www.alphaantenna.com